



CLINICAL PATHOLOGY IN CATS AND DOGS - WHY SPECIES, BREED AND AGE MATTER

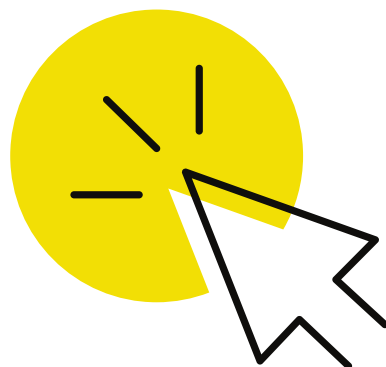
By Helen Campbell BVM&S FRCPath MRCVS and
Alina Bodnariu DVM MSc PhD FRCPath MRCVS

The webinar will highlight important differences between canine and feline laboratory results, particularities of certain canine and feline breeds, as well as age-related differences in reference intervals of biochemical and haematological analytes.

Learning Objectives:

- To recognise species differences in canine and feline haematology & biochemistry
- To recognise physiological haematology & biochemistry differences in young/growing patients
- To recognise haematology & biochemistry differences which may be seen in older patients
- To recognise common breed-associated differences in haematology & biochemistry
- To recognise common haematology & biochemistry abnormalities which may be artefactual

**Click the icon
to watch FREE
on demand**



NationWide

LABORATORIES



About the speakers

Helen graduated from R(D)SVS Edinburgh in 2002 and worked in mixed and small animal practice in Derbyshire & Staffordshire for 5 years. In 2007 she joined NationWide Laboratories as a trainee clinical pathologist, obtaining her FRCPath in 2011. She particularly enjoys haematology, endocrinology, and case discussions and advice calls with vets.

Alina graduated from the Faculty of Veterinary Medicine Bucharest in 2004. Following her postgraduate studies, she worked for two years in small animal general practice in the UK. In 2010, she undertook a residency in Veterinary Clinical Pathology within a UK-based commercial veterinary diagnostic laboratory, with external training at the RVC and she was awarded her FRCPath in 2016. Between 2014 and 2017 Alina was a visiting teaching fellow at the School of Veterinary Medicine, University of Surrey. She joined NationWide Laboratories in 2017 and enjoys all aspects of veterinary clinical pathology, as well as discussing cases with clients.